

# RENDER COLOUR CHART Available Stock Colours

	Not applicable for HempBLOCK wall coating										
<b>B10</b> 1005-B 0,30	<b>BL10**</b> 0500-N 0,22	<b>G00</b> 0502-Y50R 0,24	<b>G10</b> 0804-Y30R 0,25	<b>G16</b> 3502-R 0,68	<b>G20</b> 1005-Y20R 0,27	<b>G30</b> 1502-Y50R 0,43	<b>G40</b> 3005-Y20R 0,61	<b>G50</b> 2500-N 0,60	<b>G71</b> 2505-Y 0,66	<b>G76</b> 2005-R90B 0,57	<b>J10</b> 1020-Y30R 0,37
											
<b>J20</b> 0907-Y10R 0,30	<b>J30</b> 0515-Y20R 0,41	<b>J39</b> 0907-Y30R 0,30	<b>J40</b> 1010-Y20R 0,31	<b>J50</b> 1020-Y20R 0,33	<b>J60</b> 1030-Y20R 0,40	<b>J70</b> 1040-Y20R 0,41	<b>O10</b> 0507-Y40R 0,29	<b>O20</b> 0515-Y50R 0,33	<b>O30</b> 0505-Y50R 0,28	<b>O40</b> 1015-Y30R 0,41	<b>O50</b> 1010-Y60R 0,36
											
<b>O60</b> 1020-Y50R 0,38	<b>O70</b> 2020-Y30R 0,48	<b>O80</b> 2030-Y40R 0,50	<b>O90</b> 2040-Y60R 0,53	<b>R10</b> 1010-Y80R 0,29	<b>R20</b> 1015-Y40R 0,33	<b>R30</b> 1510-Y60R 0,44	<b>R40</b> 1515-Y50R 0,43	<b>R50</b> 1020-Y60R 0,47	<b>R60</b> 1015-Y70R 0,39	<b>R70</b> 2030-Y70R 0,48	<b>R80</b> 3030-Y70R 0,58
											
<b>R90</b> 3040-Y80R 0,67	<b>T10</b> 1505-Y60R 0,45	<b>T20</b> 0507-Y40R 0,30	<b>T30</b> 2010-Y20R 0,60	<b>T40</b> 0907-Y50R 0,33	<b>T50</b> 1010-Y30R 0,35	<b>T60</b> 2010-Y 0,54	<b>T70</b> 1015-Y30R 0,50	<b>T80</b> 1510-Y20R 0,44	<b>T90</b> 1510-Y40R 0,43	<b>V10</b> 1005-Y10R 0,41	<b>V20</b> 0804-G20Y 0,35

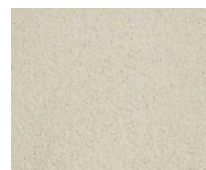
## Finish Options



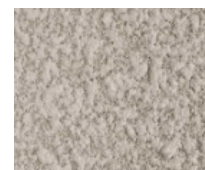
Fine Finish



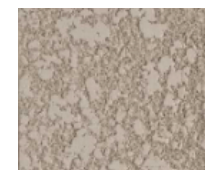
Medium Finish



Trowelled



Rustic



Rustic 'crushed'



Balinese or Moroccan style

# RENDER COLOUR CHART Colours to be ordered

 <b>B23</b> 1015-R80B 0,34	 <b>B33</b> 2040-R90B 0,39	 <b>B42</b> 2020-R80B 0,41	 <b>B62</b> 4030-R80B 0,74*	 <b>B68</b> 4502-R 0,77*	 <b>B112</b> 4020-R40B 0,80*	 <b>G60</b> 5500-N 0,84*	 <b>G68</b> 4010-R30B 0,69	 <b>G78</b> 1510-R60B 0,45	 <b>G84</b> 6010-Y30R 0,77*	 <b>G95</b> 6502-B 0,88*	 <b>G101</b> 2010-R 0,43
 <b>G108</b> 4005-Y20R 0,76*	 <b>G117</b> 7005-R80B 0,90*	 <b>G132</b> 5010-R30B 0,75*	 <b>G162</b> 4005-Y80R 0,68	 <b>J29</b> 1020-Y20R 0,35	 <b>J33</b> 1015-Y20R 0,34	 <b>J53</b> 1030-Y30R 0,40	 <b>J91</b> 1040-Y10R 0,48	 <b>O74</b> 2040-Y20R 0,46	 <b>O84</b> 3030-Y20R 0,62	 <b>O88</b> 4030-Y40R 0,70	 <b>O138</b> 5020-Y20R 0,78*
 <b>O147</b> 3020-Y30R 0,66	 <b>O181</b> 2050-Y30R 0,50	 <b>O225</b> 3060-Y60R 0,54	 <b>R32</b> 2020-Y80R 0,54	 <b>R64</b> 3020-Y80R 0,53	 <b>R91</b> 3040-Y90R 0,56	 <b>R93</b> 4040-Y80R 0,68	 <b>R211</b> 4030-Y90R 0,79*	 <b>T28</b> 3010-R 0,62	 <b>T48</b> 1010-Y40R 0,35	 <b>T106</b> 1515-Y20R 0,54	 <b>T148</b> 5020-Y10R 0,82*
 <b>T153</b> 2010-Y40R 0,54	 <b>T164</b> 3020-Y60R 0,67	 <b>T167</b> 4020-Y90R 0,78*	 <b>T177</b> 3010-Y50R 0,65	 <b>T181</b> 5020-Y50R 0,80*	 <b>T184</b> 5010-Y70R 0,80*	 <b>T193</b> 1515-Y30R 0,53	 <b>V17</b> 3020-G30Y 0,50	 <b>V45</b> 2010-B90G 0,45	 <b>V59</b> 4010-G30Y 0,65	 <b>V84</b> 3020-G 0,51	 <b>V87</b> 2030-G90Y 0,44

## THESE ARE THE CHARACTERISTICS OF THE LIME PAREXAL RENDER:

- **Water absorption:** Wc 2
  - **Reaction to fire:** A1
  - **Apparent Density:** 1,400 kg / m<sup>3</sup>
  - **Modulus of elasticity:** 2,700 MPa
  - **Flexural strength (average at 28 days):** 1 MPa
- **Water vapor permeability:** greater than 0.8 g/m<sup>2</sup>. h. mm Hg.
  - **Water vapor permeability  $\mu^*$ :**  $\leq 12$
  - **Sd value:** about 0.12 m (for a thickness of 10 mm)

The colours of this colour chart are presented on a computer screen, devise or printed on paper and may be subject to certain variations. It is advised to look at a real sample.

\* Colours with a solar absorption coefficient exceeding 0.7

These strong colours are more sensitive to the phenomena of nuance and efflorescence as well as to climatic constraints. Their use therefore requires an implementation adapted to humidity and temperature conditions.